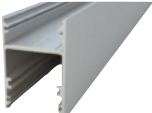

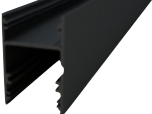

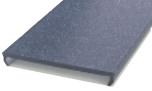
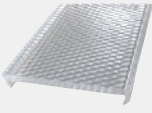

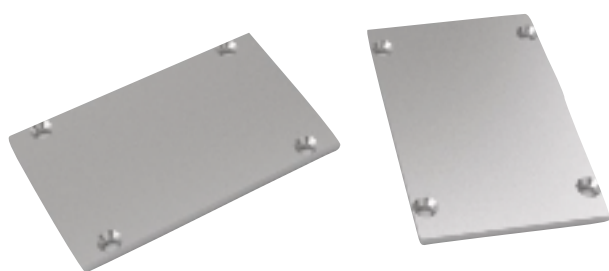


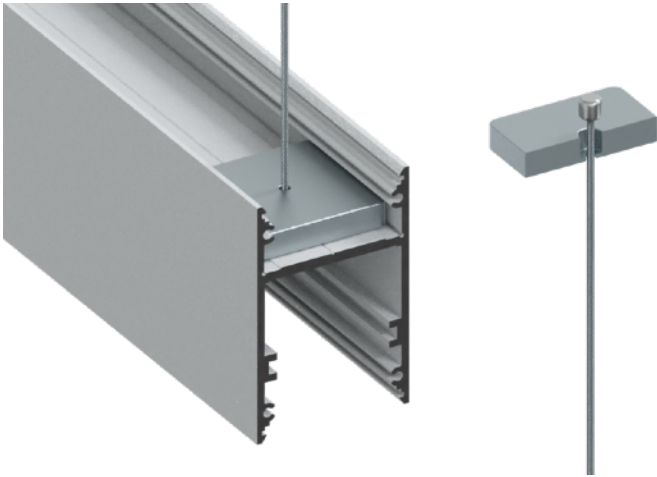
Profilo in alluminio anodizzato argento, bianco o nero in lunghezze a misura fino ad un massimo di 3 mt. Con differenti tipi di copertura come indicato in tabella. Disponibile con circuiti di diversa potenza, anche in versione biemissione, nei colori bianco caldo (3000K), bianco natural (4000K) e bianco freddo (5700K).

- Anche in versione **dynamic white**
- **Dimmerabile da driver e smartphone**

	CLC 10W/mt (3000K / 4000K)	CLC 20W/mt (3000K / 4000K)	CLC 2x20W/mt (3000K / 4000K)	ALS 17W/mt (3000K / 4000K / 5700K)	ALS 2x17W/mt (3000K / 4000K / 5700K)	
Profilo anodizzato grigio, lunghezza massima 3 mt	✓	✓	✓	✓	✓	
	✓	✓	✓	✓	✓	
	✓	✓	✓	✓	✓	
Profilo anodizzato bianco, lunghezza massima 3 mt	✓	✓	✓	✓	✓	
	✓	✓	✓	✓	✓	
	✓	✓	✓	✓	✓	
Profilo anodizzato nero, lunghezza massima 3 mt	✓	✓	✓	✓	✓	
	✓	✓	✓	✓	✓	
	✓	✓	✓	✓	✓	
Cover PMMA	Copertura in PMMA opalino					
Cover PMMA N	Copertura in PMMA nero					
Cover PT	Copertura prismata trasparente					
Cover A PMMA	Copertura alta in PMMA opalino					

Tappi di chiusura inclusi





Kit fissaggio sospensione



Kit giunzione angolare per sospensione



Kit sospensione ad inclinazione regolabile

Kit fissaggio a soffitto

